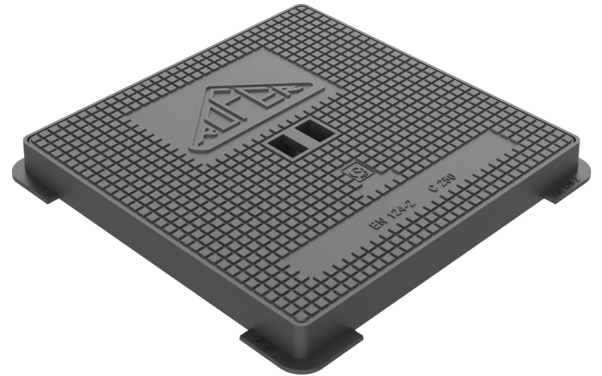




Registro hidráulico cuadrado. Tapa y marco.

Square manhole. Cover and frame.

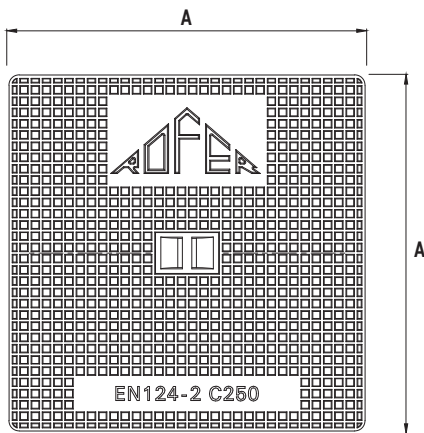
Material/Material	Fundición dúctil (GJS 500/7) / Ductile iron
Acabado/Coating	Bituminosa negra / Black bitumen
Clase/Class	C250
Especificación/Specification	EN 124-2



- Superficie metálica antideslizante / Non-skid metal surface
- Hendidura para apertura fácil / Recess for easy opening
- Marco con alas para puesta en obra / Frame with wings for construction

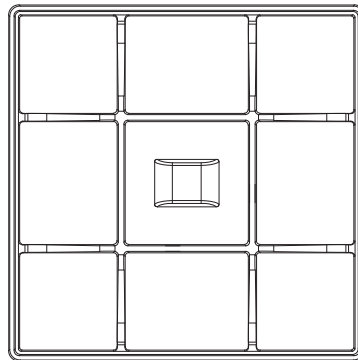
TAPA VISTA SUPERIOR

Top view cover



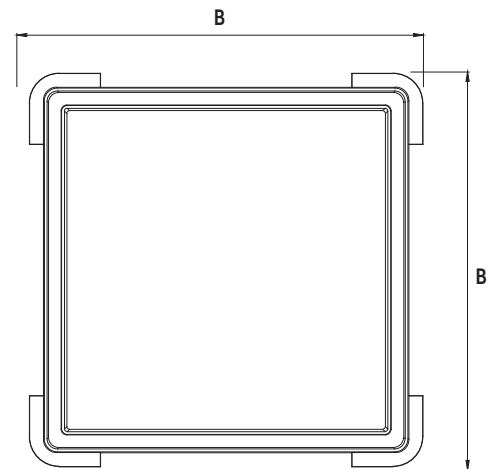
TAPA VISTA INFERIOR

Bottom view cover



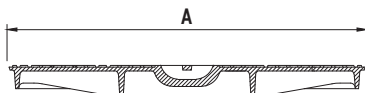
MARCO VISTA SUPERIOR

Top view frame



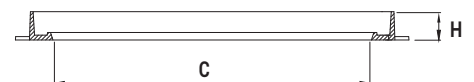
SECCIÓN TAPA

Section cover



SECCIÓN MARCO

Section frame



Referencia	Denominación	Tapa(A)	Ext marco(B)	Paso(C)	Altura(H)	Peso(±5%)
09010088	40 x 40	380 mm	420 mm	340 mm	30 mm	13 kg
09010090	50 x 50	489 mm	540 mm	450 mm	30 mm	21 kg
09010092	60 x 60	572,5 mm	620 mm	530 mm	50 mm	33 kg